

REFILL POUCH

▲ Tear Here

maxill

CLEANER • DEODORIZER • DISINFECTANT • MILDEWSTAT • TUBERCULOCIDE
(on hard inanimate surfaces)

hxTM₂

Hard Surface Disinfectant
Ready to Use Towelettes

ITEM 61164R



160
WIPES

ACTIVE INGREDIENTS:

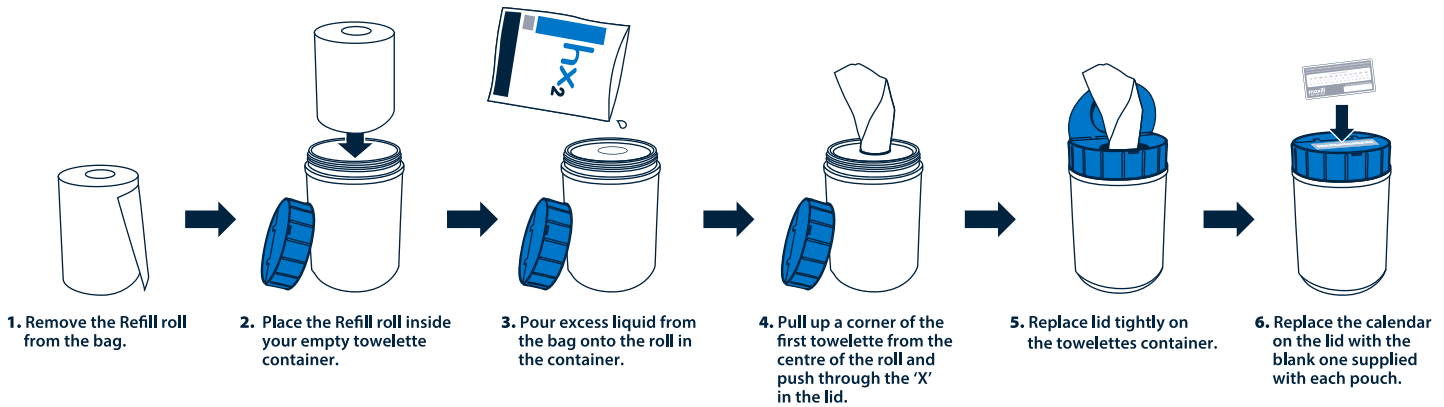
- n-Alkyl (5% C₁₂, 60% C₁₄, 30% C₁₆, 5% C₁₈)
 Dimethyl benzyl ammonium chlorides 0.105%
- n-Alkyl (68% C₁₂, 32% C₁₄)
 Dimethyl ethylbenzyl ammonium chlorides 0.105%



+D8926070561164R07

COMMERCIAL USE | READ LABEL BEFORE USING
KEEP OUT OF REACH OF CHILDREN

Tear Here 



DIRECTIONS FOR USE

This product is designed specifically as a general non-acid cleaner and disinfectant for use in hospitals, nursing homes, schools, hotels and restaurants as well as for use in industrial and institutional food processing establishments. It is formulated to disinfect hard non-porous, inanimate surfaces such as floors, walls, metal surfaces, stainless steel surfaces, porcelain, glazed ceramic tile, plastic surfaces, bathrooms, shower stalls, bathtubs and cabinets. For plastic and painted surfaces, spot test on an inconspicuous area before use. A rinse with potable water is required for surfaces in direct contact with food. In addition, this product deodorizes those areas which generally are hard to keep fresh smelling, such as garbage storage areas, empty garbage bins and cans, basements, rest rooms and other areas which are prone to odours caused by microorganisms.

DISPENSER: to start feed. Remove large cover and discard seal from container. From center of towelette roll, pull up towelette corner, twist into a point and thread it through the hole in the container cover. DO NOT PUSH FINGER THROUGH HOLE. Pull through about 2-3 cm. Replace cover. Pull out first towelette and snap off at a 90-degree angle. Remaining towelettes feed automatically ready for next use. When through using, keep small center cap closed to prevent moisture loss. Do not flush.

DISINFECTION, DEODORIZING AND CLEANING

Remove gross filth or heavy soil prior to application of the product. Remove towelette from container and thoroughly wipe surface. Allow surface to remain wet for 10 minutes. For surfaces and/or objects that may come into direct contact with children at the mouthing stage of development, a rinse with potable water is recommended. No scrubbing is necessary. The product will not leave grit or soap scum.

BACTERICIDAL ACTIVITY

When used as directed, this product exhibits effective disinfectant activity against the organisms: Staphylococcus aureus, Salmonella enterica, Pseudomonas aeruginosa, Escherichia coli, Escherichia coli O157:H7, Vancomycin Resistant Enterococcus faecalis, Methicillin Resistant Staphylococcus aureus, and Staphylococcus aureus (VISA), and meets the requirements for hospital use.

TUBERCULOCIDAL ACTIVITY

This product exhibits disinfectant efficacy against Mycobacterium terrae when the treated surface is allowed to remain wet for 5 minutes.

VIRUCIDAL ACTIVITY

This product, when used on environmental, inanimate, non-porous surfaces exhibits effective virucidal activity against HIV-1:

KILLS HIV-1 ON PRE-CLEANED ENVIRONMENTAL SURFACES/OBJECTS PREVIOUSLY SOILED WITH BLOOD/BODY FLUIDS in health care settings (Hospitals, Nursing Homes) or other settings in which there is an expected likelihood of soiling of inanimate surfaces/objects with blood or bodily fluids, and in which the surfaces/objects likely to be soiled with blood or bodily fluids can be associated with the potential for transmission of Human Immunodeficiency Virus Type 1.

Special Instructions for Cleaning and Decontamination against HIV-1 of Surfaces Soiled with Blood or Body Fluids

Personal Protection: When handling items soiled with blood or body fluids use disposable latex gloves, gowns, masks, or eye coverings.

Cleaning Procedures: Blood and other body fluids must be thoroughly cleaned from surfaces and objects before application of this product.

Contact Time/Concentration: Wipe surface until thoroughly wet and allow surface to remain wet for 10 minutes.

Infectious materials disposal: Any materials used in the cleaning process that may contain blood or body fluids are to be disposed of immediately in accordance with local regulations for infectious materials disposal.

MILDEWSTAT

To control mold and mildew on pre-cleaned, hard, non-porous surfaces wipe surface to be treated making sure to wet completely. Let air dry. Repeat application at weekly intervals or when mildew growth appears.

FUNGICIDAL ACTIVITY

This product is fungicidal against the pathogenic fungi, Trichophyton mentagrophytes (Athlete's Foot Fungus) when used as directed on hard surfaces found in bathrooms, shower stalls, locker rooms, or other clean, non-porous, hard surfaces commonly contacted by bare feet.

EFFICACY TESTS HAVE DEMONSTRATED THAT THIS PRODUCT IS AN EFFECTIVE BACTERICIDE IN THE PRESENCE OF ORGANIC SOIL (5% BLOOD SERUM).

PRECAUTIONS: CAUTION: MAY IRRITATE EYES. KEEP OUT OF REACH OF CHILDREN. Do not get in eyes or on clothing. Avoid contamination of food. Wash thoroughly with soap and water after handling. Throw used towelette in the trash. Do not flush.

FIRST AID IF IN EYES:

Hold eyes open and rinse slowly and gently with water for 15–20 minutes. Remove contact lenses if present, after the first 5 minutes, then continue rinsing. Call a poison control center or doctor for treatment advice.

Take container, label or product name and Registration Number with you when seeking medical attention.

NOTE TO PHYSICIAN:

Treat symptomatically.

STORAGE:

Store at room temperature.

DISPOSAL:

Throw used towelette in the trash. Do not flush.

For information on disposal of unused, unwanted product, contact the manufacturer or the appropriate municipal/provincial/territorial agency or product stewardship organization. Rinse the emptied container thoroughly prior to disposal. Non-refillable container. Dispose of the empty container in accordance with municipal/provincial/territorial requirements. Offer for recycling, if available.